



Ten Thousand Trees

A call to action to increase Petaluma's shade canopy by 10%





The Climate Emergency demands solutions now.

- **Trees** are proven to help absorb greenhouse gas emissions and heat.
- **Native Trees** are more drought and fire resistant and create biodiversity.
- **Canopy Trees** have many other benefits like slowing traffic, reducing toxins in air and water, aiding mental health, and even reducing crime.



We must preserve our trees, and plant many more!

Fire threat is increasing, but:

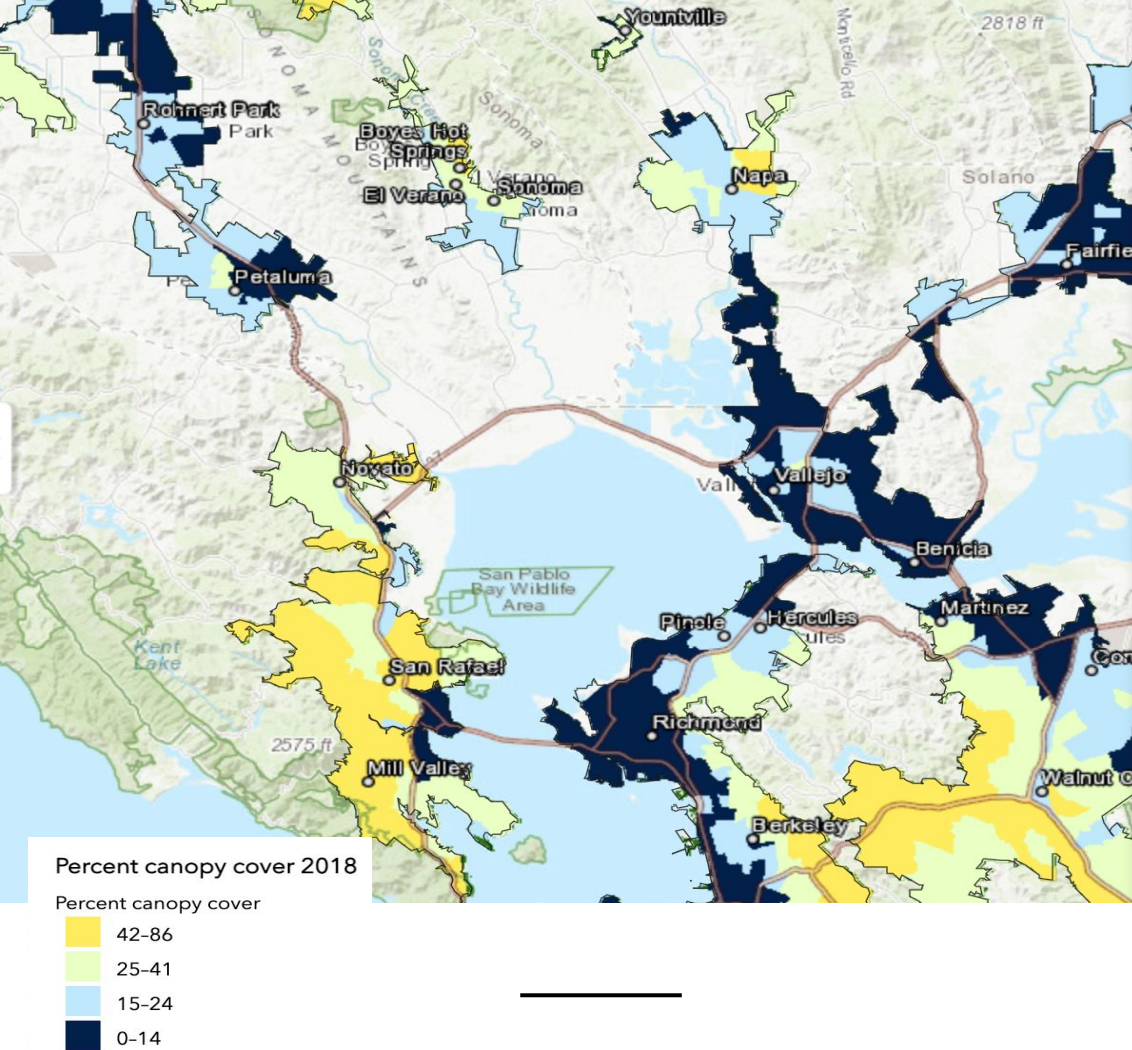
- CalFire is testing oak savannah fire buffers around cities.
- Controlled burn under oaks appears to protect, even as fires advance.
- Our native oaks perform well in forest fires.
- We can plan ahead and factor in town perimeter planting with native oak savannah, with multiple benefits.
- Throughout our city, we need the right species in the right places for a healthy, spaced, safe urban forest.



Petaluma's heat islands and unprotected Highway 101 exposure are bad for our health and disproportionately affect our less fortunate. Yet we are losing large numbers of our big shade trees—our canopy.

We must preserve our trees!





Why Do We Need More Trees?

Petaluma's canopy coverage is more like Richmond's and Vallejo's than Sonoma's, Napa's, or San Rafael's.

Source: USDA 2018 Canopy Mapping

Trees can reduce temperatures by up to 35 degrees!

Source: National Geographic, July 2021

Our city's trees—our urban forest— is a multi-million dollar asset.

National Geographic, July 2021:

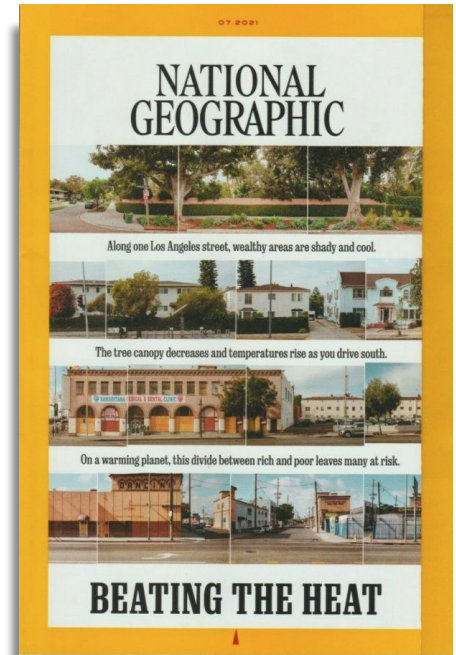
Wealthy neighborhoods are shady and cool, with average 40% tree canopy coverage.

USDA 2018 Urban Tree Canopy Survey:

Petaluma has sparse tree canopy, mostly 15-24%.

Petaluma's Southeast quadrant is 0-15%!

Yet Petaluma just lost 900 big redwoods*, equal to 20,000 new 1" trees. (*estimated 20" diameter)





How can we expand the canopy 10%, or 10,000 trees?

- Commit with staff, funds, and laws.
- Preserve existing canopy.
- Partner across agencies and with other organizations.
- Set targets and monitoring.
- Act. Hurry carefully.

Parks and Other Public Lands

- “Reforest” large sections of parks with smaller trees, adding no-mow zones
- Add tree bump-outs to streets
- Rethink and enable more reclaimed water delivery
- Plant resilient natives
- Interplant carefully among existing trees
- Outreach to county for planting roadside row’s

3,000
NEW
TREES





500
NEW
TREES

Schools

Possible ways to facilitate:

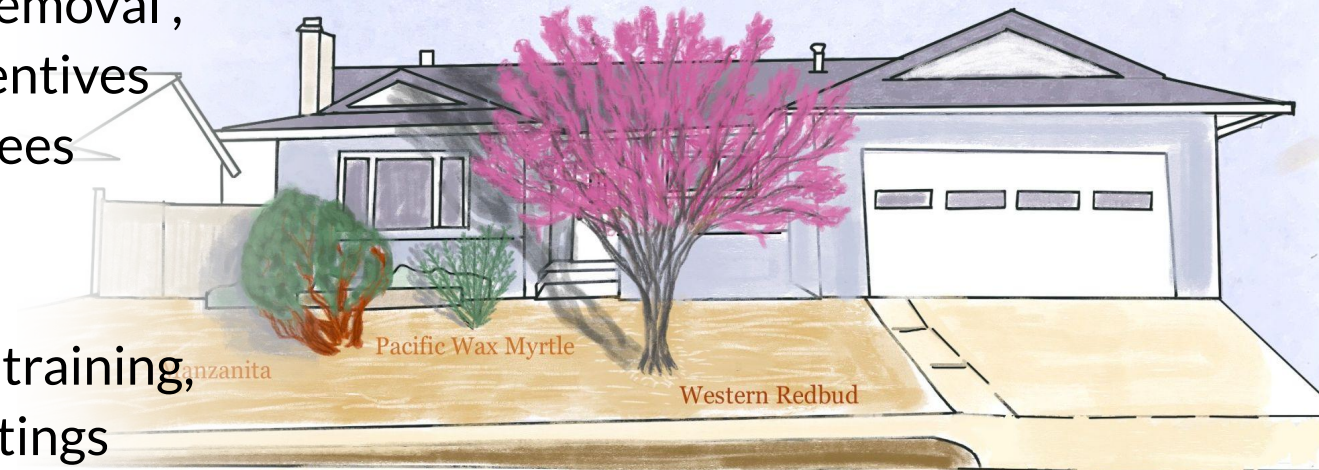
- Start now 1-2 dozen new trees each: 18 schools
- Aim for 30 new trees per school average in 3 yrs.
- Engage students in placing trees in their own yards to the credit of their school



Homeowners

4,000
NEW
TREES

- Incentivize 20% of our 22,000 households to plant a new tree
- Provide concrete removal, education, and incentives to restore street trees
- Tree bump outs
- Provide free trees, training, and volunteer plantings



Drawing by Kathy Andrew

Churches, Hospitals, Non Profits

500
NEW
TREES

Devise a program providing free trees, watering and volunteer maintenance in exchange for numerous sites for groves of trees



Commercial Properties

- Incentivize native canopy tree planting
- Retrofit older developments; enforce landscaping plans where necessary
- Provide trees and concrete removal in exchange for watering and maintenance
- Consider stormwater management funds and costs to help

1,500
NEW
TREES



Easy to say, but how do we do it?



- Create a 10,000 Trees steering committee with a 3 year action plan for preservation and expansion
- Enact a new Tree Ordinance to protect our tree canopy, and enforce it
- Create an Urban Forestry Department to preserve and expand tree canopy
- Dedicate time of an experienced grant writer to achieve tree funding
- Aggressively explore remediation funding for loss of 900 redwoods to Highway 101
- Partner with groups like ours, Cool Cities, and Daily Acts to site, plant, and maintain trees

**Trees Are One Of The Most Trustworthy
Answers To Our Climate Crisis.
Doing Nothing Is Not An Option.
It's Hard But We Can Do It!**

